

MATERIAL NOTES

ITEM	NOM. THICK	CORE MATERIAL	CORE GRADE	FACE MATERIAL	BACK MATERIAL
LEFT VERTICAL SIDE	3/4"	VENEER CORE	N/A	RAW	RAW
RIGHT VERTICAL SIDE	3/4"	VENEER CORE	N/A	RAW	RAW
TOP HORIZONTAL COMPONENT	3/4"	VENEER CORE	N/A	RAW	RAW
BOTTOM HORIZONTAL COMPONENT	3/4"	VENEER CORE	N/A	RAW	RAW
ADJUSTABLE SHELF	1"	VENEER CORE	N/A	RAW	RAW
FIXED SHELF	1"	VENEER CORE	N/A	RAW	RAW
VERTICAL BACK COMPONENT	1/4"	VENEER CORE	N/A	RAW	RAW
HINGED DOORS	3/4"	VENEER CORE	N/A	RAW	RAW
NAILER COMPONENT	3/4"	VENEER CORE	N/A	RAW	RAW

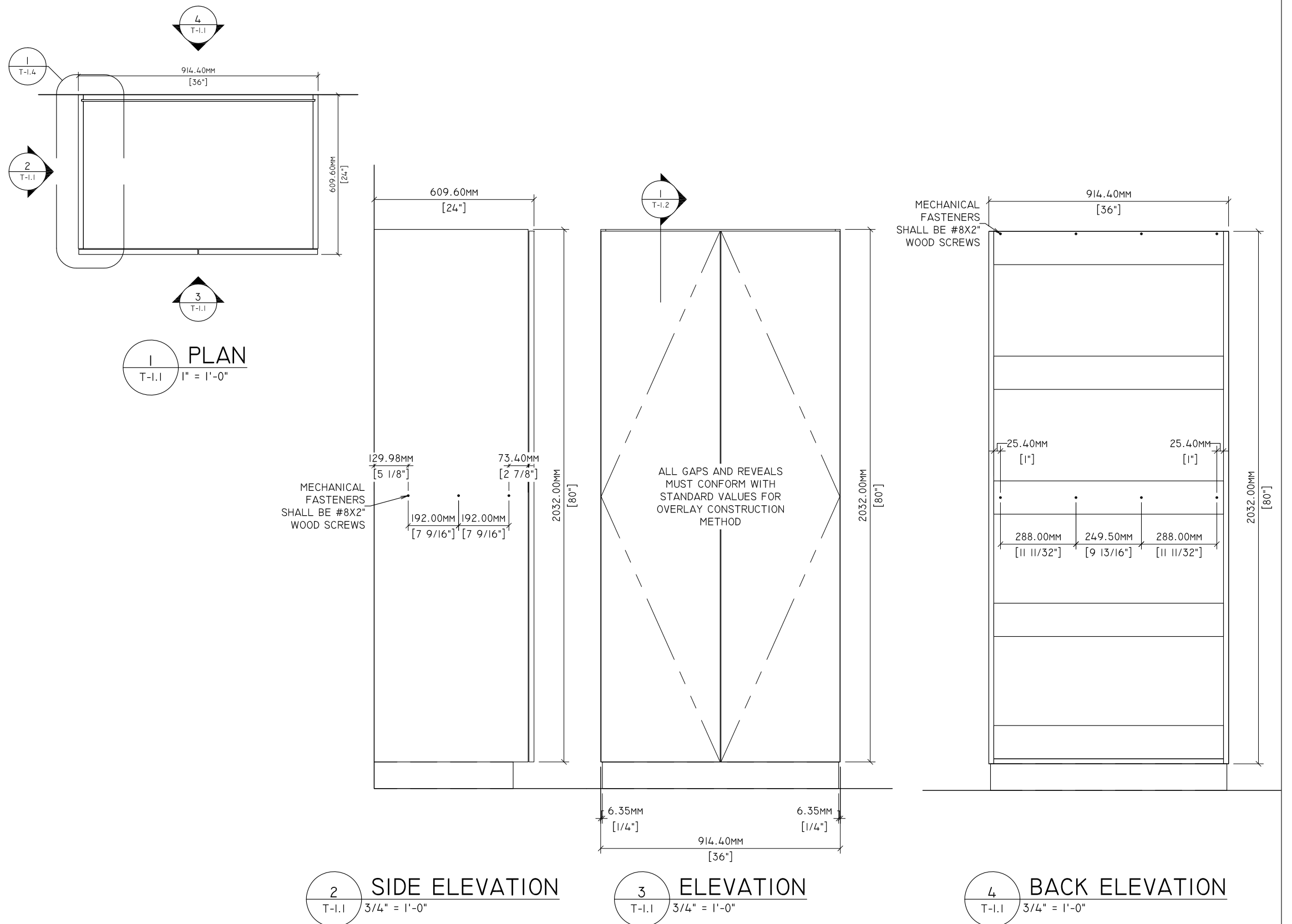
PERMISSIBLE TOLERANCES

- PERMISSIBLE TOLERANCES, PROVIDED ALL AESTHETIC STANDARD REQUIREMENTS ARE MET:
 - STRETCHERS AND NAILERS MAY ALLOW FOR A TOLERANCE OF +/- 1.6MM [1/16"] IN WIDTH
 - MACHINED JOINERY AND FASTENERS USED FOR STRUCTURAL PERFORMANCE MUST MAINTAIN SPACING PATTERN BASED ON TESTED PRODUCT AND ENGINEERING DRAWINGS
 - MACHINING +/- 1 MM [.039"], EXCLUDING DRILL DIAMETERS
 - ADDITIONAL FASTENERS AND/OR ADHESIVE MAY BE USED TO MEET AESTHETIC REQUIREMENTS

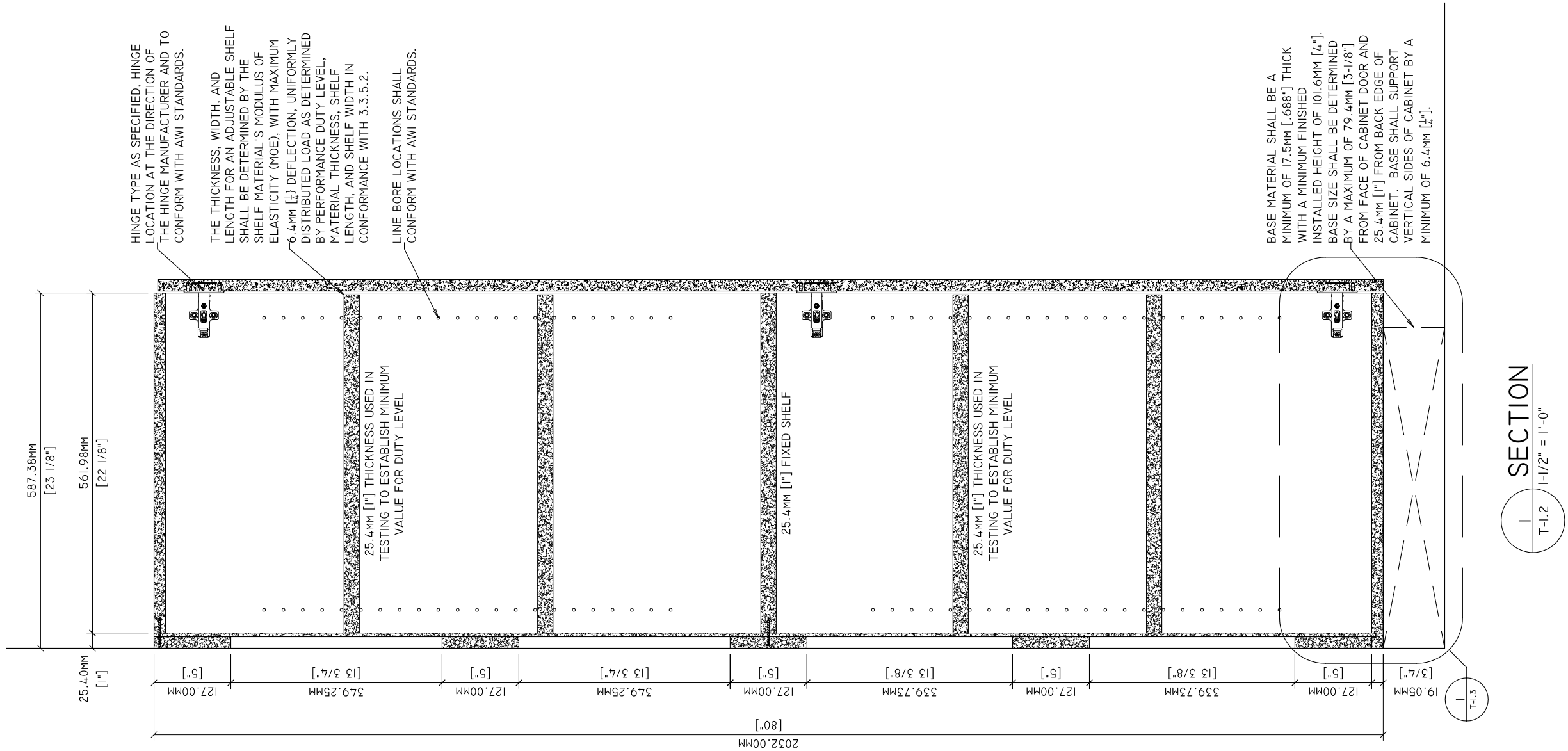
*SUBJECT TO CHANGE WITHOUT NOTICE. LATEST EDITION WILL BE ENFORCED.

GENERAL NOTES

- THESE DRAWINGS DO NOT INDICATE CONFORMANCE WITH AWI STANDARDS. MANUFACTURERS SHALL ACQUIRE AN OFFICIAL AWI TEST REPORT IN ORDER TO INDICATE CONFORMANCE.
- CABINET SIZE AND CONFIGURATION MAY BE ALTERED AS LONG AS JOINERY, SPACING, AND LOCATION REQUIREMENTS ARE FOLLOWED.
- ALL JOINERY SHALL MEET THE TOLERANCES OF AWI STANDARDS.
- DOWELS SHALL BE 8MM X 30MM.
- CONSTRUCTION ILLUSTRATED HEREIN IS CONFORMING FOR ALL FRAMELESS DOOR AND DRAWER OVERLAYS.



Drawn By:	HD	REVISIONS		SPECIMEN DWG. NO.:
Reviewed By:	-	①	-	JOINERY METHOD NO.: 8MM DOWEL
Revised By:	-HKM	②	- 7/7/2020	SPECIMEN MATERIAL: VENEER CORE
Revised By:	-	③	-	BATCH QUANTITY: -
Approved By:	-	④	-	SCALE: AS NOTED

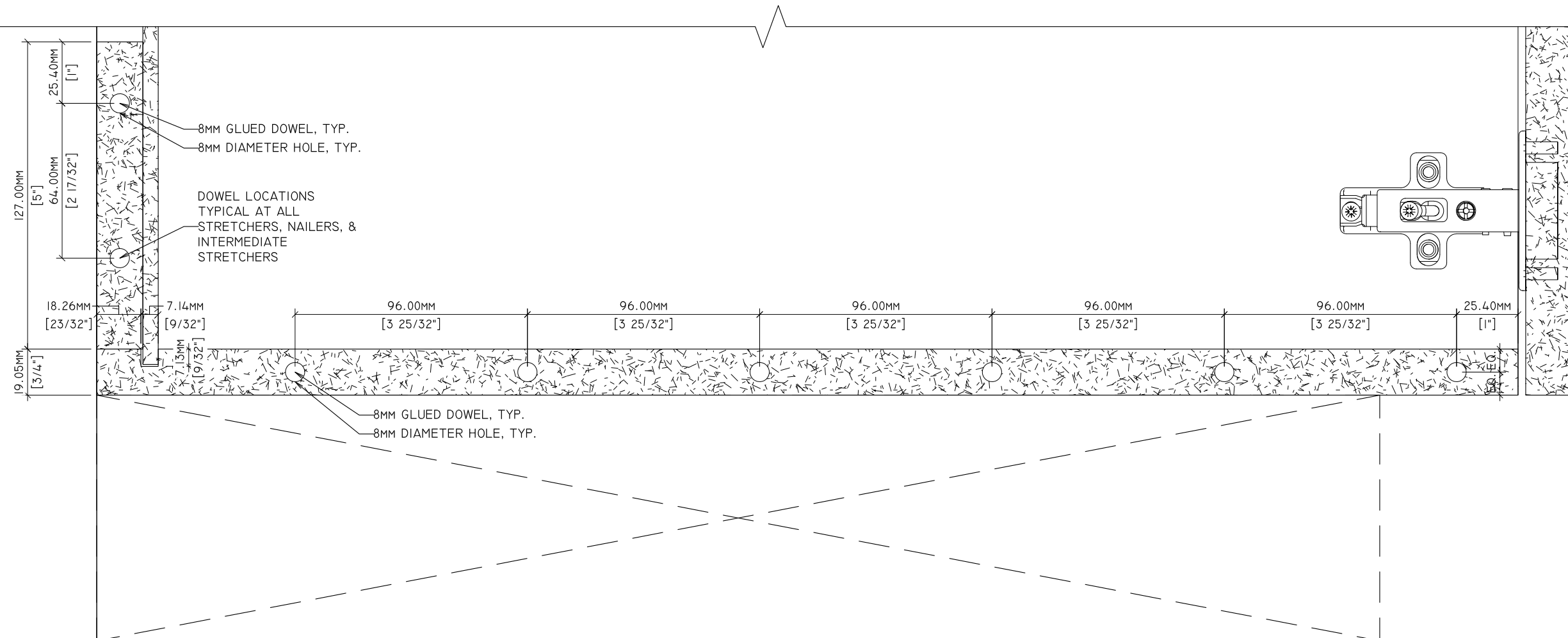


SECTION
T-1.2
1-1/2" = 1'-0"



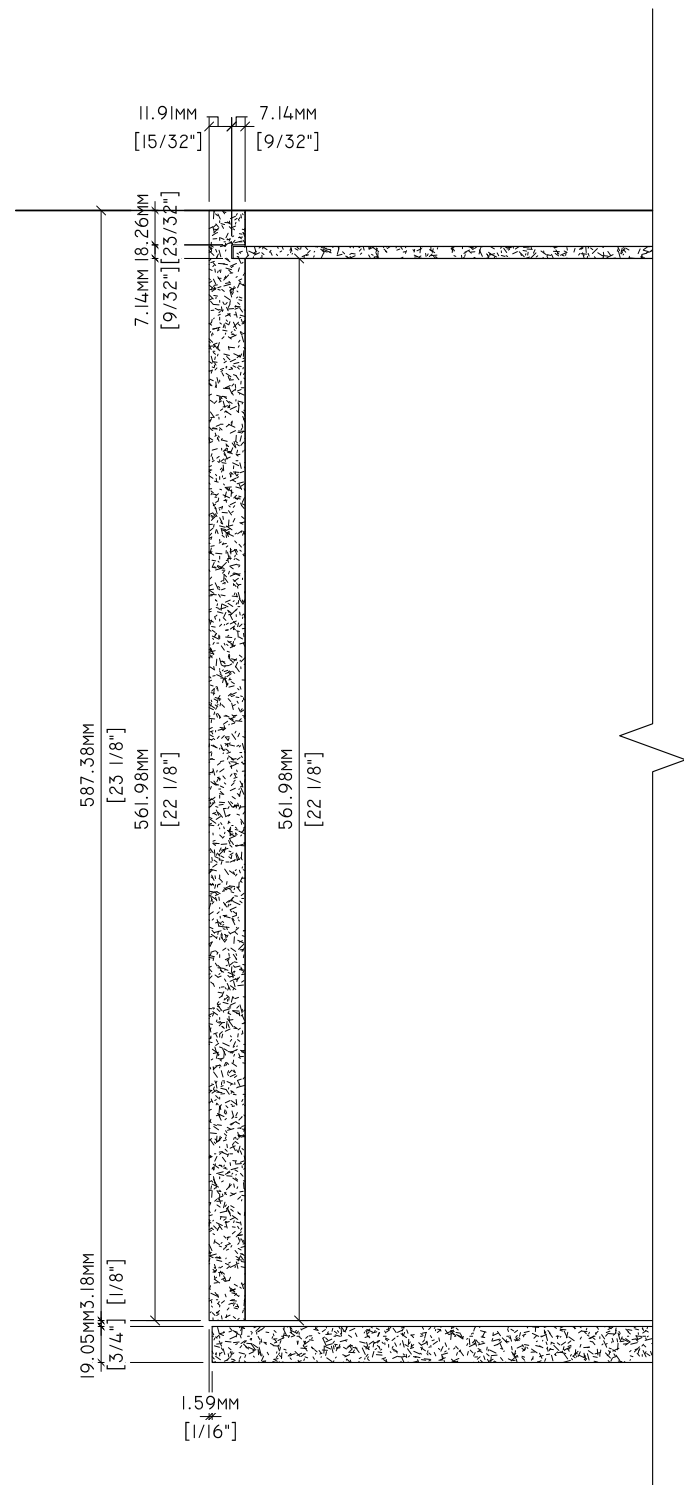
Standards Development and Performance Testing
1310 Southerfield Road
Americus, GA 31709

Drawn By:	HD	REVISIONS		SPECIMEN DWG. NO.: T-1.2
Reviewed By:	-	①	-	JOINERY METHOD NO.: 8MM DOWEL
Revised By:	HKM	②	- 7/7/2020	SPECIMEN MATERIAL: VENEER CORE
Revised By:	-	③	-	BATCH QUANTITY: -
Approved By:	-	④	-	SCALE: AS NOTED

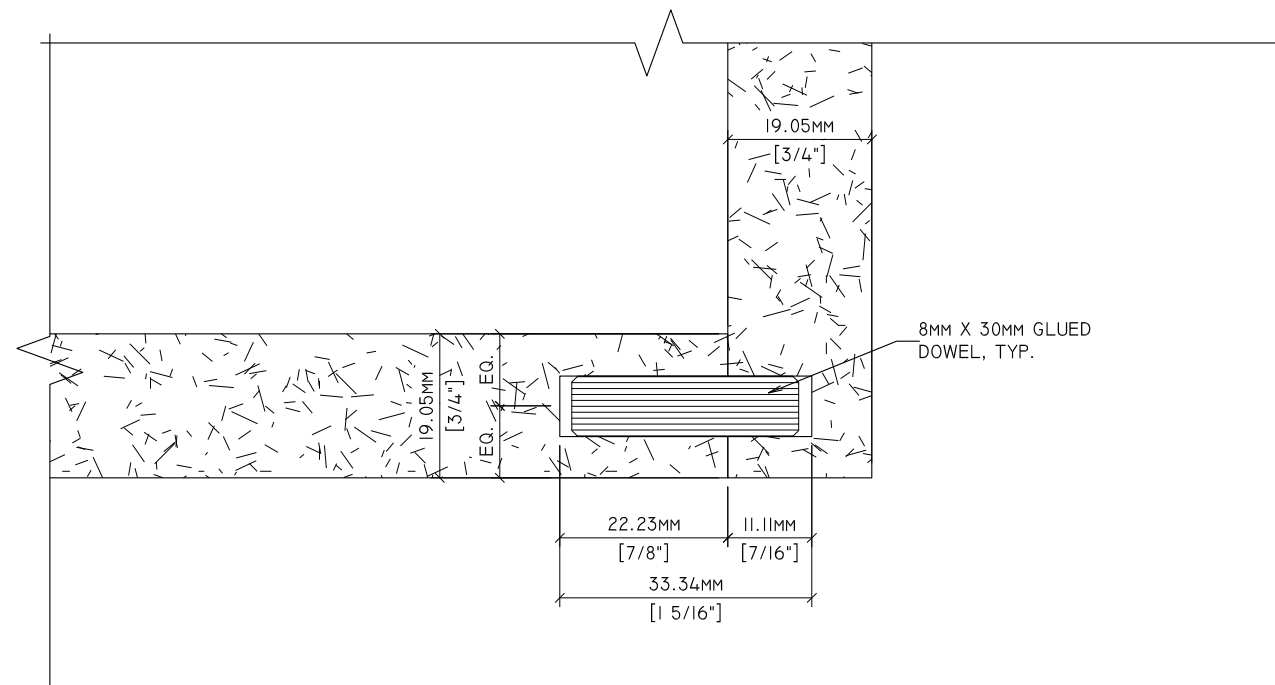


1 DETAIL
 T-1.3 6" = 1'-0"

Drawn By:	HD	REVISIONS		SPECIMEN DWG. NO.: T-1.3
Reviewed By:	-	①	-	JOINERY METHOD NO.: 8MM DOWEL
Revised By:	HKM	②	- 7/7/2020	SPECIMEN MATERIAL: VENEER CORE
Revised By:		③	-	BATCH QUANTITY: -
Approved By:	-	④	-	SCALE: AS NOTED



1 PLAN DETAIL
T-1.4 3" = 1'-0"



2 DETAIL
T-1.4 12" = 1'-0"

Drawn By:	HD	REVISIONS		SPECIMEN DWG. NO.: T-1.4
Reviewed By:	-	①	-	JOINERY METHOD NO.: 8MM DOWEL
Revised By:	HKM	②	- 7/7/2020	SPECIMEN MATERIAL: VENEER CORE
Revised By:		③	-	BATCH QUANTITY: -
Approved By:	-	④	-	SCALE: AS NOTED