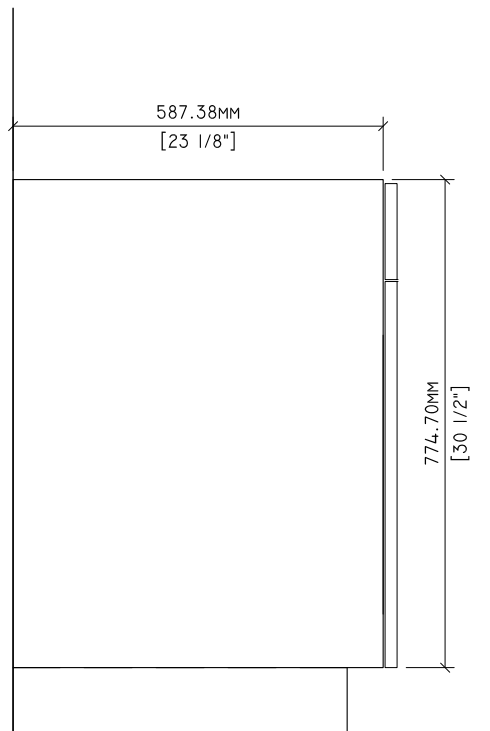
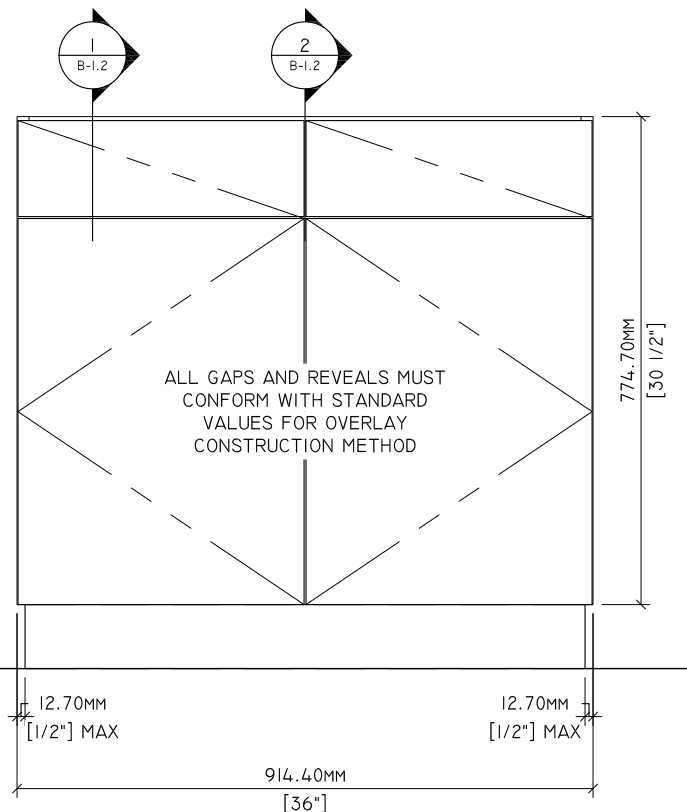


1 PLAN
B-1.1 1" = 1'-0"

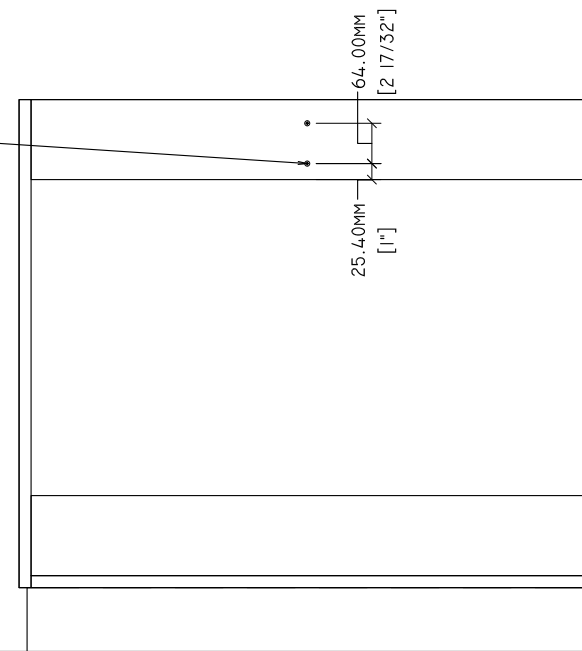


2 SIDE ELEVATION
B-1.1 1" = 1'-0"



3 ELEVATION
B-1.1 1" = 1'-0"

MECHANICAL FASTENERS FOR DRAWER DIVIDER SHALL BE #8 1-1/2" WOOD SCREWS



4 BACK ELEVATION
B-1.1 1" = 1'-0"

MATERIAL NOTES

| ITEM | NOM. THICK | CORE MATERIAL | CORE GRADE | FACE MATERIAL | BACK MATERIAL |
|-----------------------------|------------|---------------|------------|---------------|---------------|
| LEFT VERTICAL SIDE | 3/4" | PARTICLEBOARD | M2 | TFL | TFL |
| RIGHT VERTICAL SIDE | 3/4" | PARTICLEBOARD | M2 | TFL | TFL |
| TOP HORIZONTAL COMPONENT | 3/4" | PARTICLEBOARD | M2 | TFL | TFL |
| BOTTOM HORIZONTAL COMPONENT | 3/4" | PARTICLEBOARD | M2 | TFL | TFL |
| ADJUSTABLE SHELF | 1" | PARTICLEBOARD | M2 | TFL | TFL |
| VERTICAL BACK COMPONENT | 1/4" | MDF | I30 | TFL | RAW |
| HINGED DOORS | 3/4" | PARTICLEBOARD | M2 | TFL | TFL |
| DRAWER FRONTS | 3/4" | PARTICLEBOARD | M2 | TFL | TFL |
| NAILER COMPONENT | 3/4" | PARTICLEBOARD | M2 | TFL | TFL |

PERMISSIBLE TOLERANCES

- PERMISSIBLE TOLERANCES, PROVIDED ALL AESTHETIC STANDARD REQUIREMENTS ARE MET:
 - STRETCHERS AND NAILERS MAY ALLOW FOR A TOLERANCE OF +/- 1.6MM [1/16"] IN WIDTH
 - MACHINED JOINERY AND FASTENERS USED FOR STRUCTURAL PERFORMANCE MUST MAINTAIN SPACING PATTERN BASED ON TESTED PRODUCT AND ENGINEERING DRAWINGS
 - MACHINING +/- 1 MM [.039"], EXCLUDING DRILL DIAMETERS
 - ADDITIONAL FASTENERS AND/OR ADHESIVE MAY BE USED TO MEET AESTHETIC REQUIREMENTS

*SUBJECT TO CHANGE WITHOUT NOTICE. LATEST EDITION WILL BE ENFORCED.

GENERAL NOTES

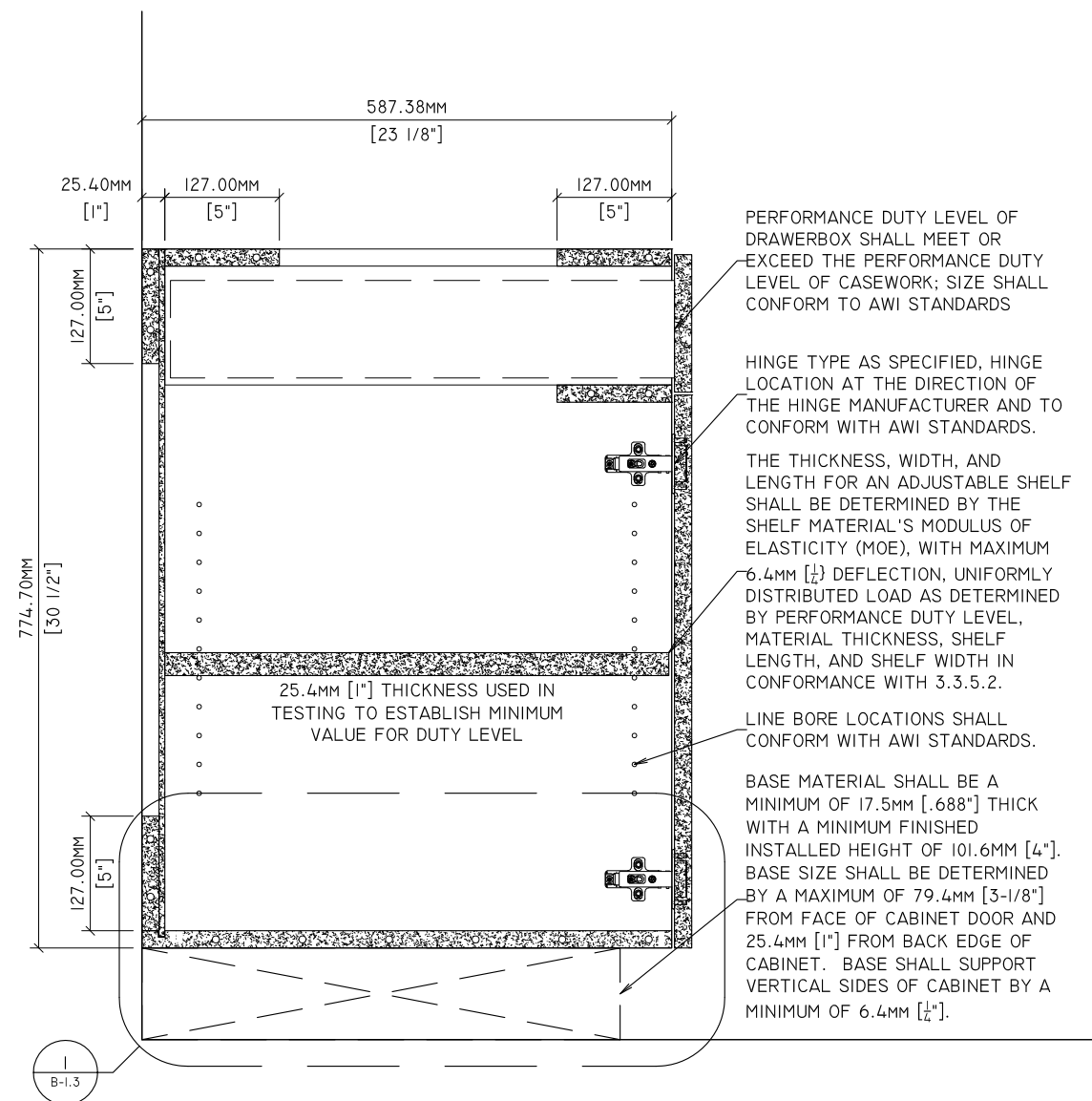
- THESE DRAWINGS DO NOT INDICATE CONFORMANCE WITH AWI STANDARDS. MANUFACTURERS SHALL ACQUIRE AN OFFICIAL AWI TEST REPORT IN ORDER TO INDICATE CONFORMANCE.
- CABINET SIZE AND CONFIGURATION MAY BE ALTERED AS LONG AS JOINERY, SPACING, AND LOCATION REQUIREMENTS ARE FOLLOWED.
- ALL JOINERY SHALL MEET THE TOLERANCES OF AWI STANDARDS.
- DOWELS SHALL BE 8MM X 30MM.
- CONSTRUCTION ILLUSTRATED HEREIN IS CONFORMING FOR ALL FRAMELESS DOOR AND DRAWER OVERLAYS.



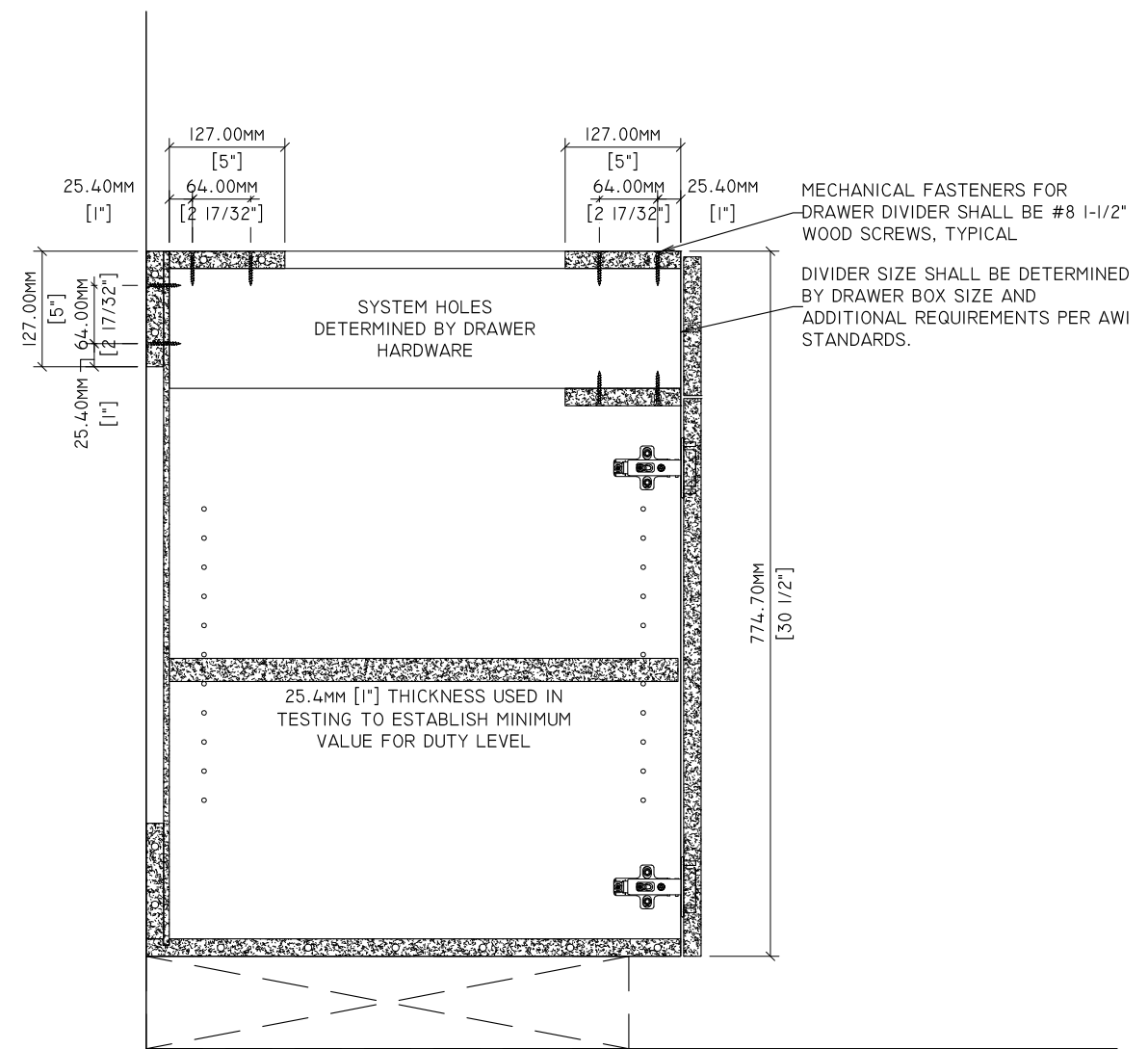
Standards Development and Performance Testing
1310 Southerfield Road
Americus, GA 31709

| Drawn By: | | REVISIONS | |
|--------------|-----|-----------|----------|
| HD | | 1 | - |
| Reviewed By: | - | 2 | 7/7/2020 |
| Revised By: | HKM | 3 | 7/9/2021 |
| Approved By: | - | 4 | - |

| | |
|---------------------|---------------|
| SPECIMEN DWG. NO.: | B-1.1 |
| JOINERY METHOD NO.: | 8MM DOWEL |
| SPECIMEN MATERIAL: | PARTICLEBOARD |
| BATCH QUANTITY:- | |
| SCALE: | AS NOTED |

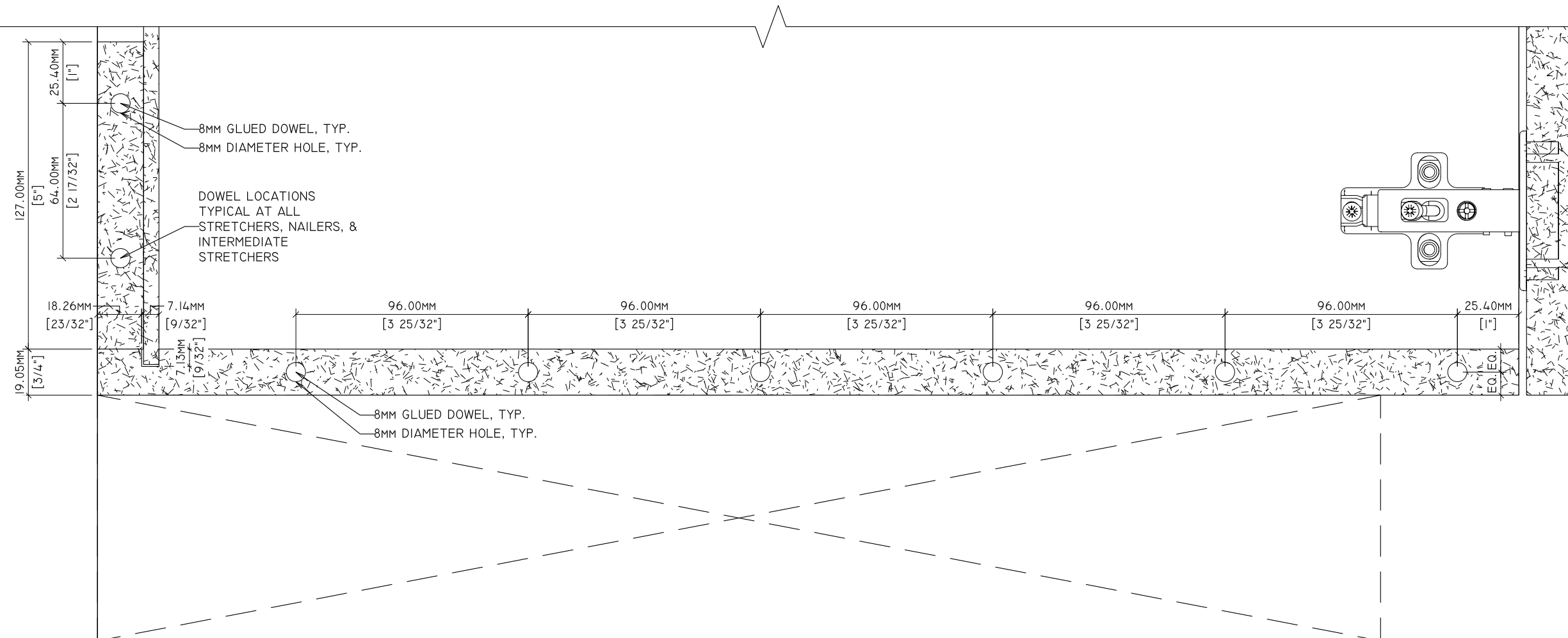


1 SECTION
B-1.2 1-1/2" = 1'-0"



2 SECTION: DRAWER DIVIDER FASTENER LOCATIONS
B-1.2 1-1/2" = 1'-0"

| | | | | |
|--------------|-----|------------------|----------|----------------------------------|
| Drawn By: | HD | REVISIONS | | SPECIMEN DWG. NO.: B-1.2 |
| Reviewed By: | - | ① | - | JOINERY METHOD NO.: 8MM DOWEL |
| Revised By: | HKM | ② | 7/7/2020 | SPECIMEN MATERIAL: PARTICLEBOARD |
| Revised By: | HKM | ③ | 7/9/2021 | BATCH QUANTITY: - |
| Approved By: | - | ④ | - | SCALE: AS NOTED |

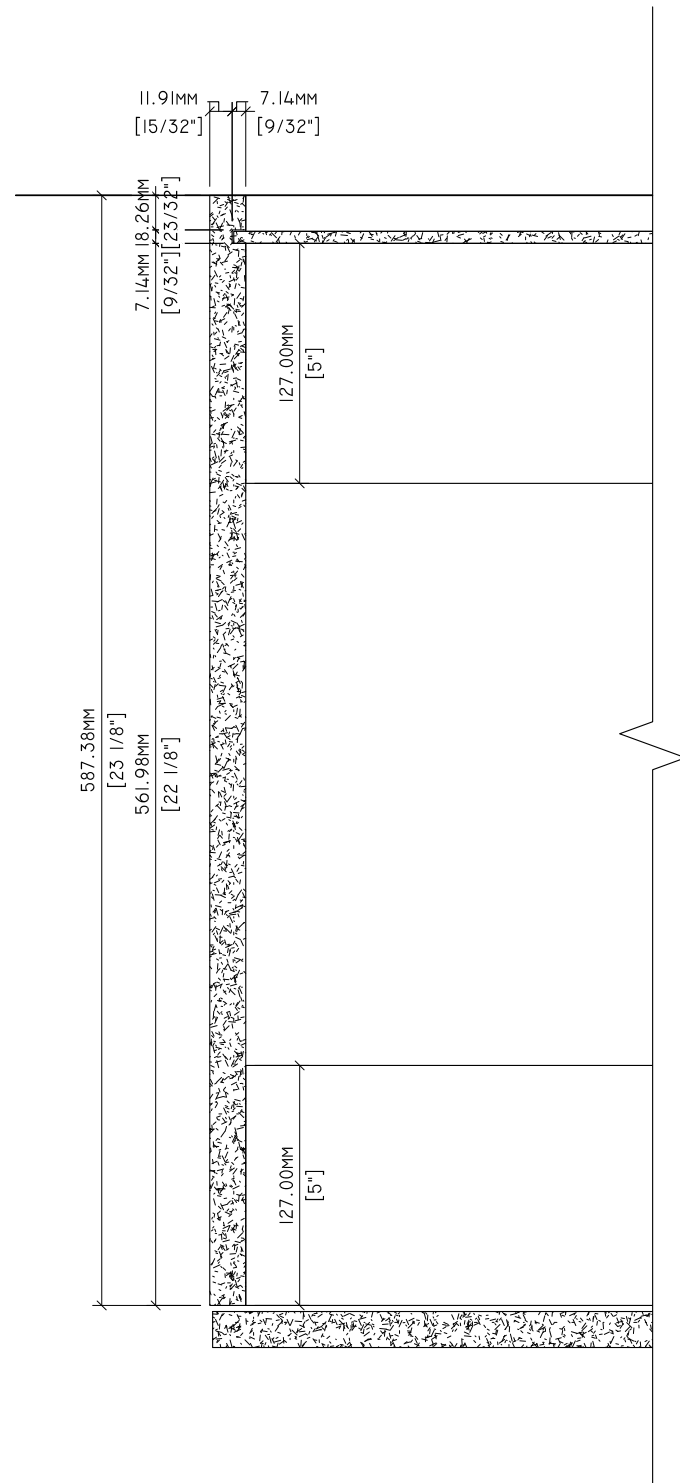


1
 B-1.3
 6" = 1'-0"

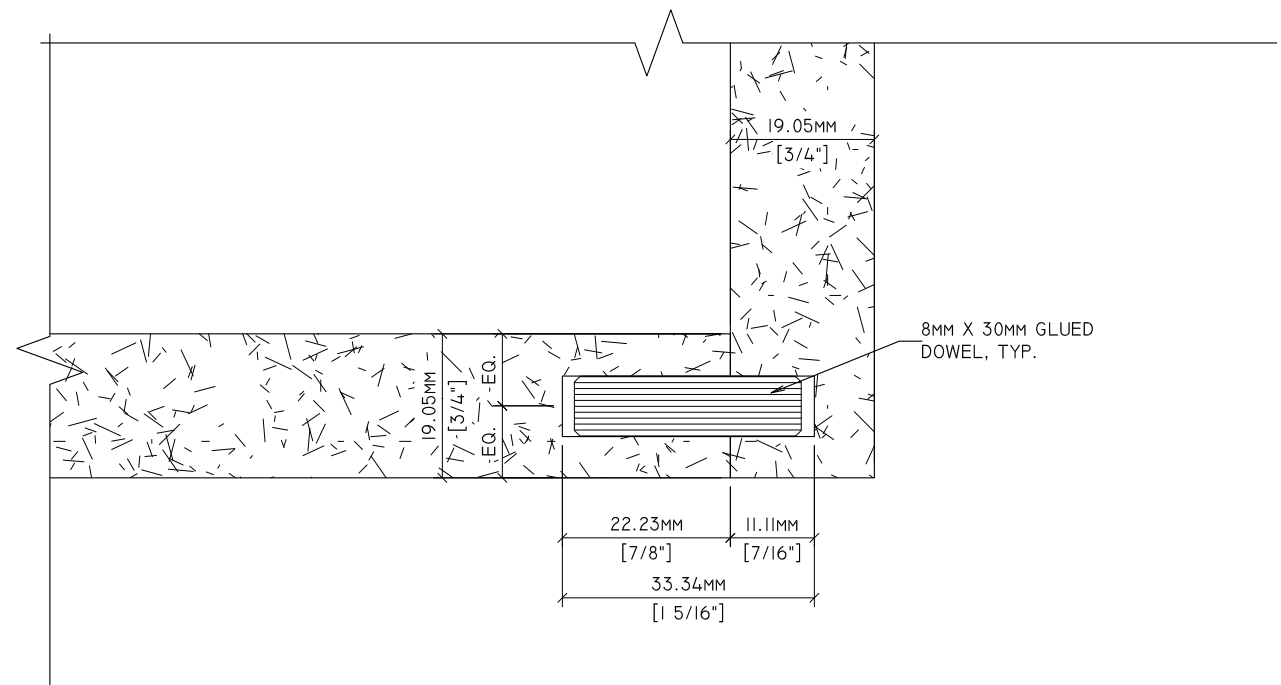


Standards Development and Performance Testing
 1310 Southerfield Road
 Americus, GA 31709

| | | | | |
|--------------|-----|------------------|----------|----------------------------------|
| Drawn By: | HD | REVISIONS | | SPECIMEN DWG. NO.: B-1.3 |
| Reviewed By: | - | ① | - | JOINERY METHOD NO.: 8MM DOWEL |
| Revised By: | HKM | ② | 7/7/2020 | SPECIMEN MATERIAL: PARTICLEBOARD |
| Revised By: | HKM | ③ | 7/9/2021 | BATCH QUANTITY: - |
| Approved By: | - | ④ | - | SCALE: AS NOTED |



1 PLAN DETAIL
B-1.4 3" = 1'-0"



2 DETAIL
B-1.4 12" = 1'-0"

| | | | | |
|--------------|-----|------------------|----------|----------------------------------|
| Drawn By: | HD | REVISIONS | | SPECIMEN DWG. NO.: B-1.4 |
| Reviewed By: | - | ① | - | JOINERY METHOD NO.: 8MM DOWEL |
| Revised By: | HKM | ② | 7/7/2020 | SPECIMEN MATERIAL: PARTICLEBOARD |
| Revised By: | HKM | ③ | 7/9/2021 | BATCH QUANTITY: - |
| Approved By: | - | ④ | - | SCALE: AS NOTED |