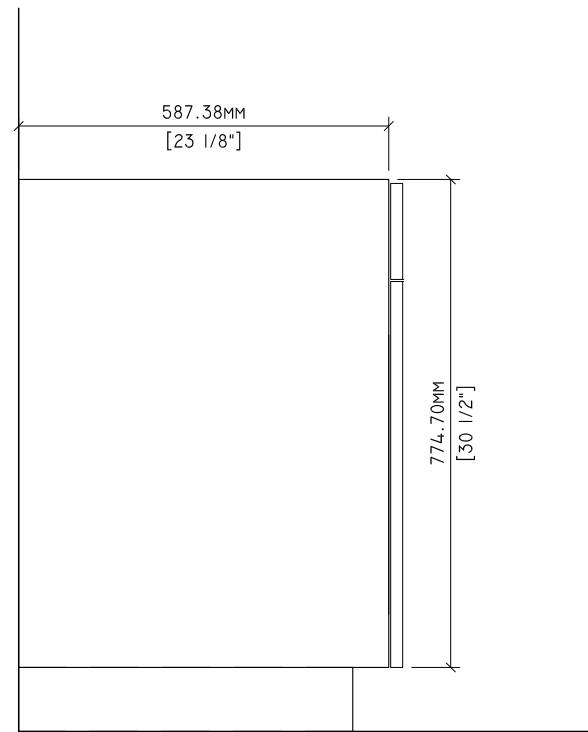
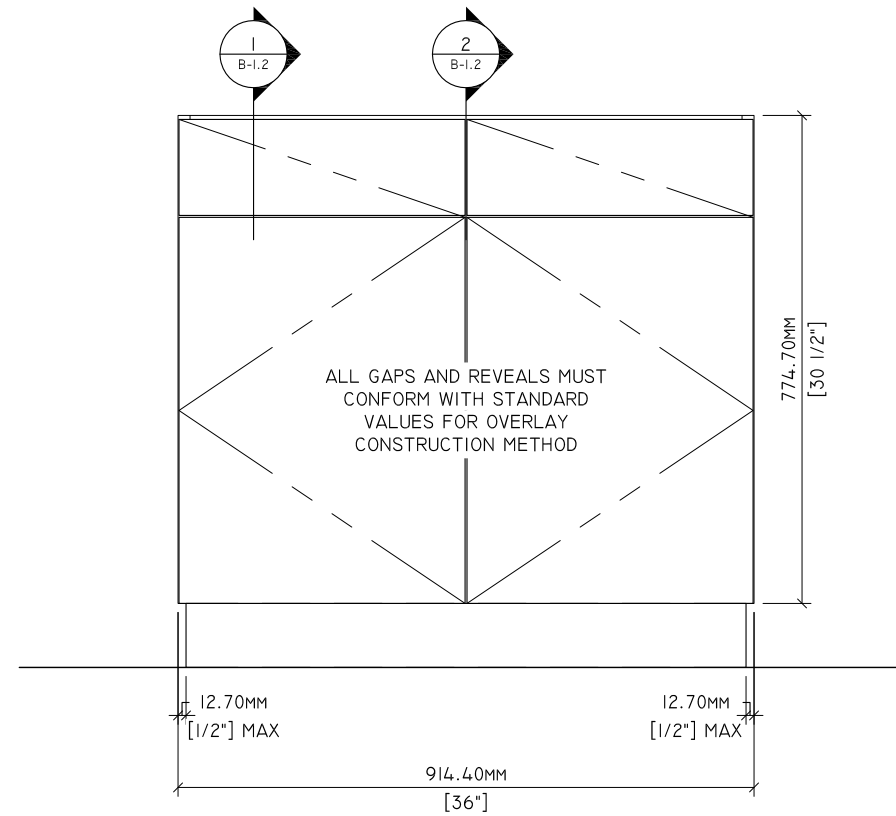


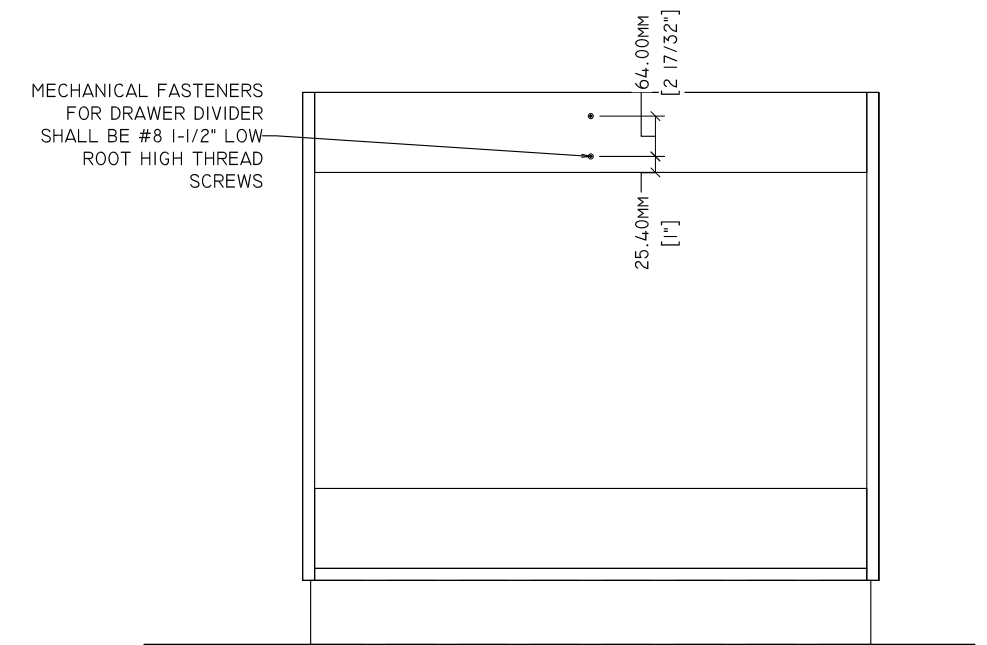
1 PLAN
B-1.1 1" = 1'-0"



2 SIDE ELEVATION
B-1.1 1" = 1'-0"



3 ELEVATION
B-1.1 1" = 1'-0"



4 BACK ELEVATION
B-1.1 1" = 1'-0"

MATERIAL NOTES

THE FOLLOWING ENGINEERING DRAWINGS ILLUSTRATE THE TESTED ENGINEERING OF DOWELED CONSTRUCTION BASE CABINETS USING GRADE 130 MDF CORE TFL (2-SIDE), M-2 PARTICLEBOARD CORE TFL (2-SIDE), AND VENEER CORE PLYWOOD. THESE DRAWINGS DO NOT INDICATE COMPLIANCE WITH AWI STANDARDS. MANUFACTURERS SHALL ACQUIRE AN OFFICIAL AWI TEST REPORT IN ORDER TO INDICATE COMPLIANCE.

ENGINEERING NOTES

- CABINET SIZE AND CONFIGURATION MAY BE ALTERED AS LONG AS JOINERY, SPACING, AND LOCATION REQUIREMENTS ARE FOLLOWED.
- ALL JOINERY SHALL MEET THE TOLERANCES OF AWI STANDARDS.
- DOWELS SHALL BE 8MM X 30MM.
- CONSTRUCTION ILLUSTRATED HEREIN IS CONFORMING FOR ALL FRAMELESS DOOR AND DRAWER OVERLAYS.
- STRETCHERS AND NAILERS MAY ALLOW FOR A TOLERANCE OF +/- 1.6MM [1/16"] IN THE 127.00MM [5"] WIDTH.

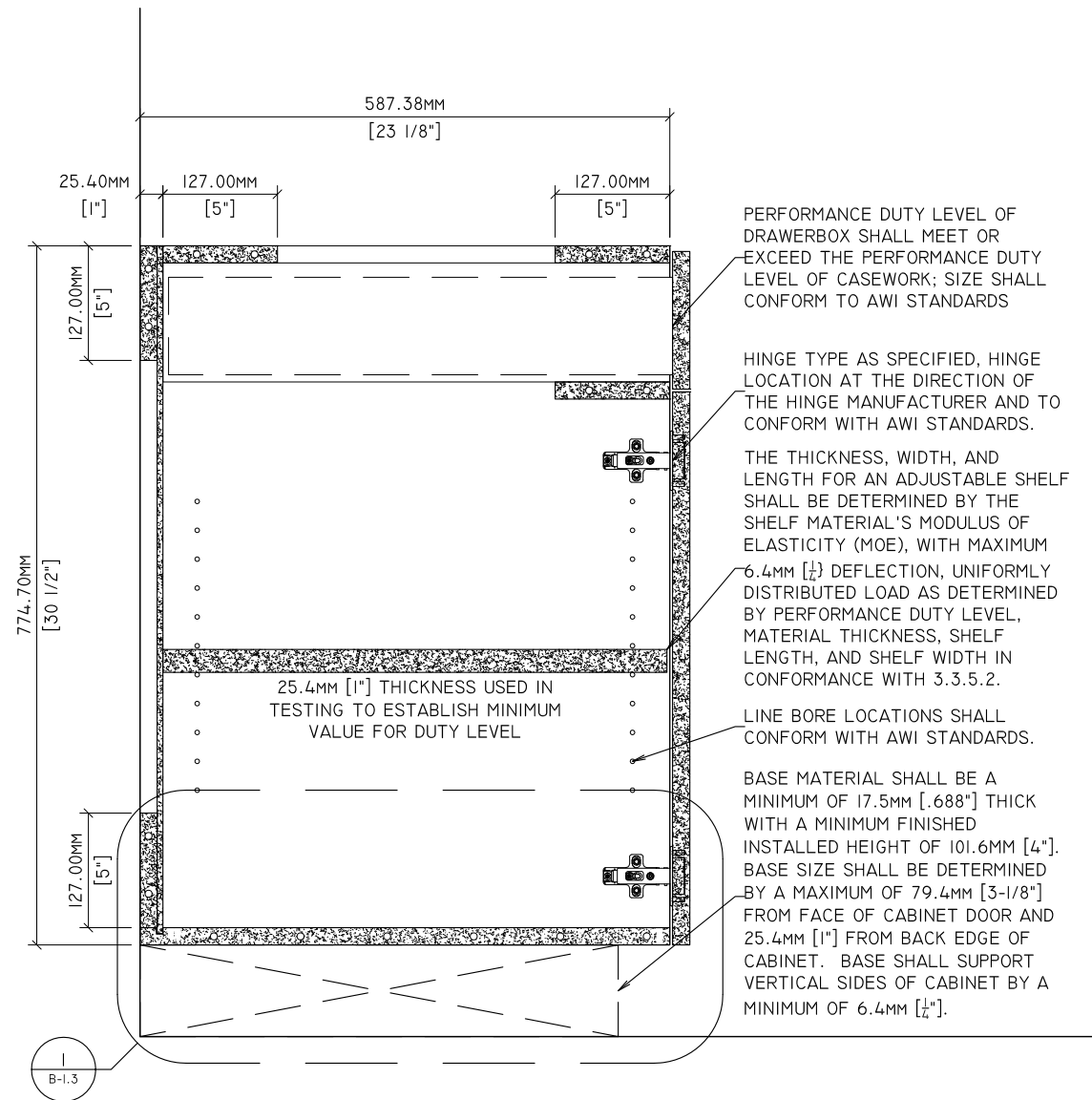
ALL GAPS AND REVEALS MUST CONFORM WITH STANDARD VALUES FOR OVERLAY CONSTRUCTION METHOD

MECHANICAL FASTENERS FOR DRAWER DIVIDER SHALL BE #8 1-1/2" LOW ROOT HIGH THREAD SCREWS

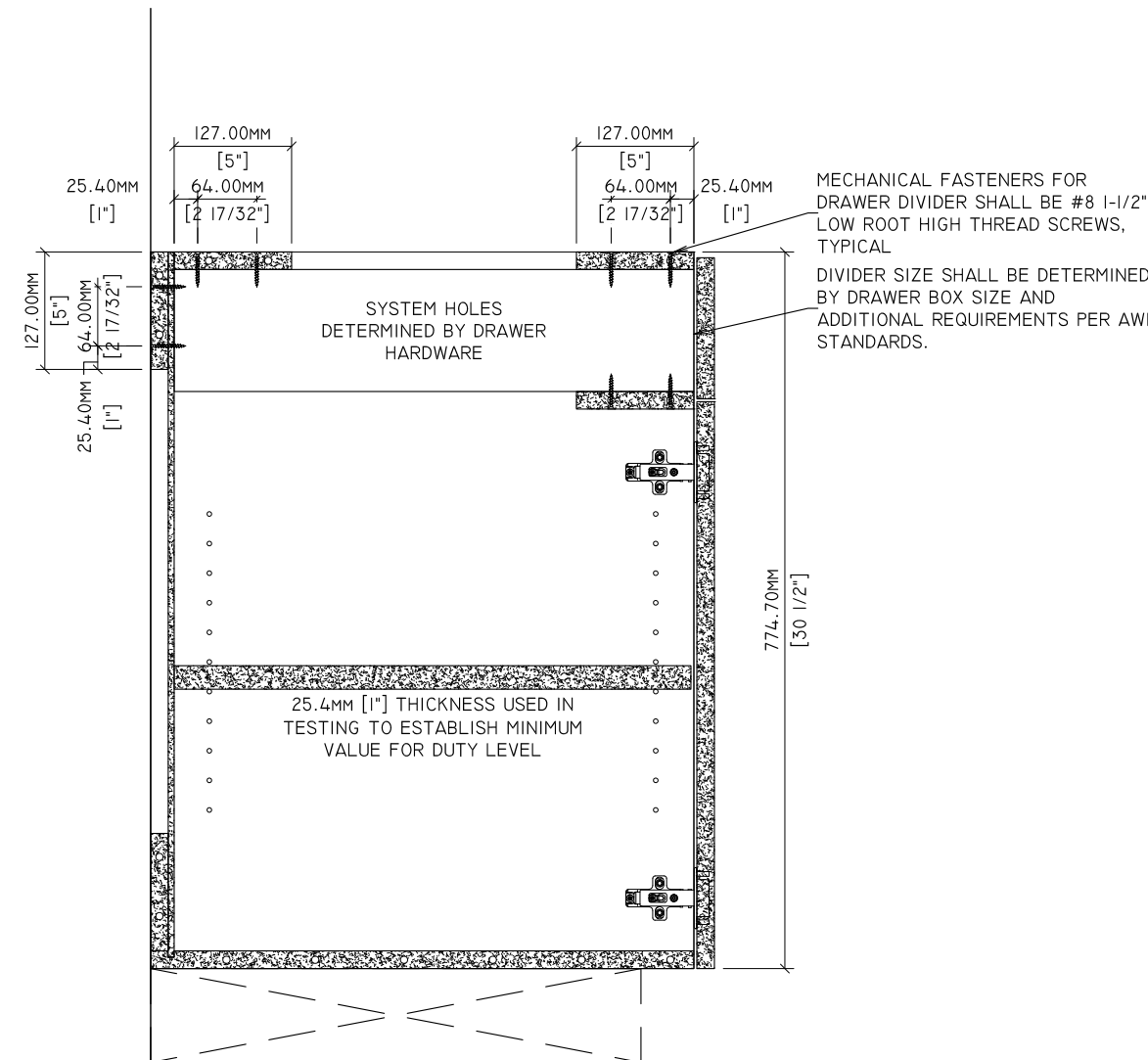


Standards Development and Performance Testing
1310 Southerfield Road
Americus, GA 31709

Drawn By:	HD	REVISIONS		SPECIMEN DWG. NO.: B-1.1
Reviewed By:	-	△1	-	JOINERY METHOD NO.: 8MM DOWEL
Revised By:	HKM	△2	7/7/2020	SPECIMEN MATERIAL: MDF, PB, VC
Revised By:	HKM	△3	7/9/2021	BATCH QUANTITY: -
Approved By:	-	△4	-	SCALE: AS NOTED

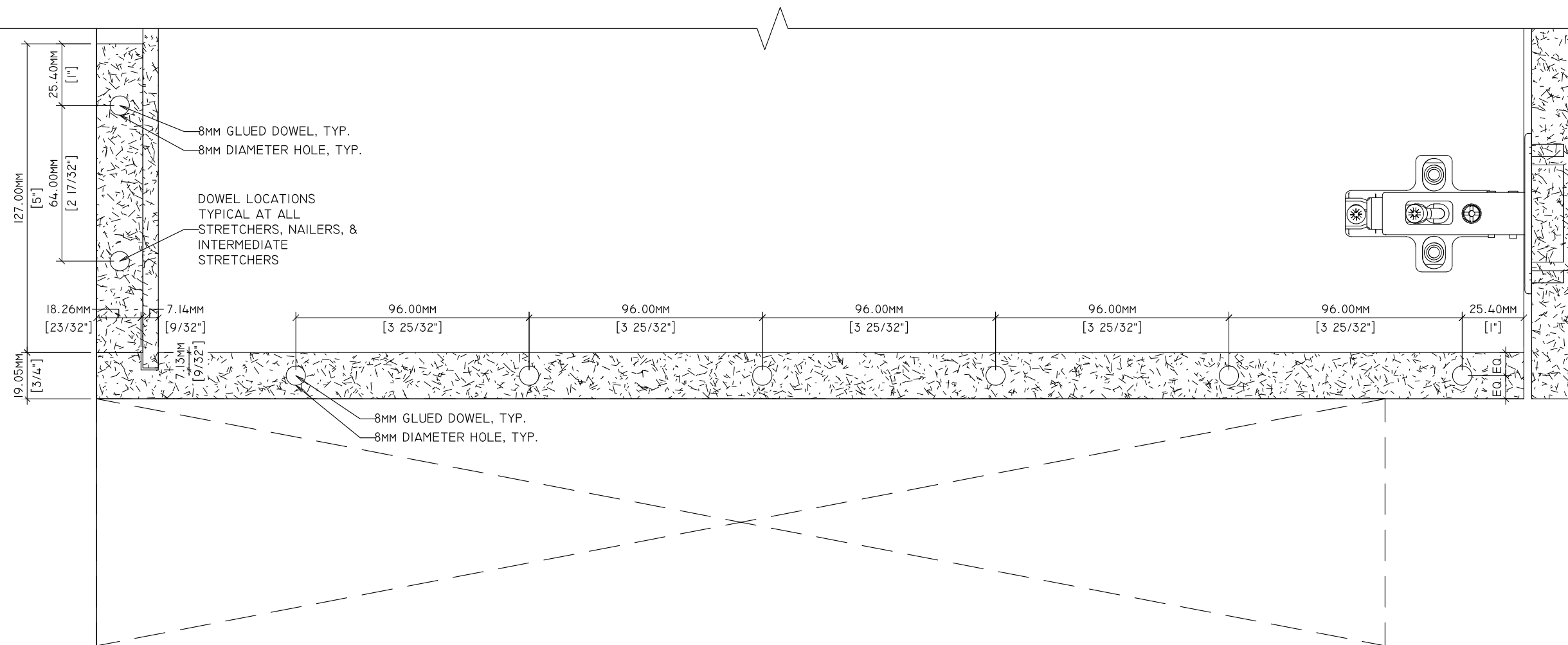


1 SECTION
B-1.2 1-1/2" = 1'-0"



2 SECTION: DRAWER DIVIDER FASTENER LOCATIONS
B-1.2 1-1/2" = 1'-0"

Drawn By:	HD	REVISIONS		SPECIMEN DWG. NO.: B-1.2
Reviewed By:	-	△1	-	JOINERY METHOD NO.: 8MM DOWEL
Revised By:	HKM	△2	7/7/2020	SPECIMEN MATERIAL: MDF, PB, VC
Revised By:	HKM	△3	7/9/2021	BATCH QUANTITY: -
Approved By:	-	△4	-	SCALE: AS NOTED



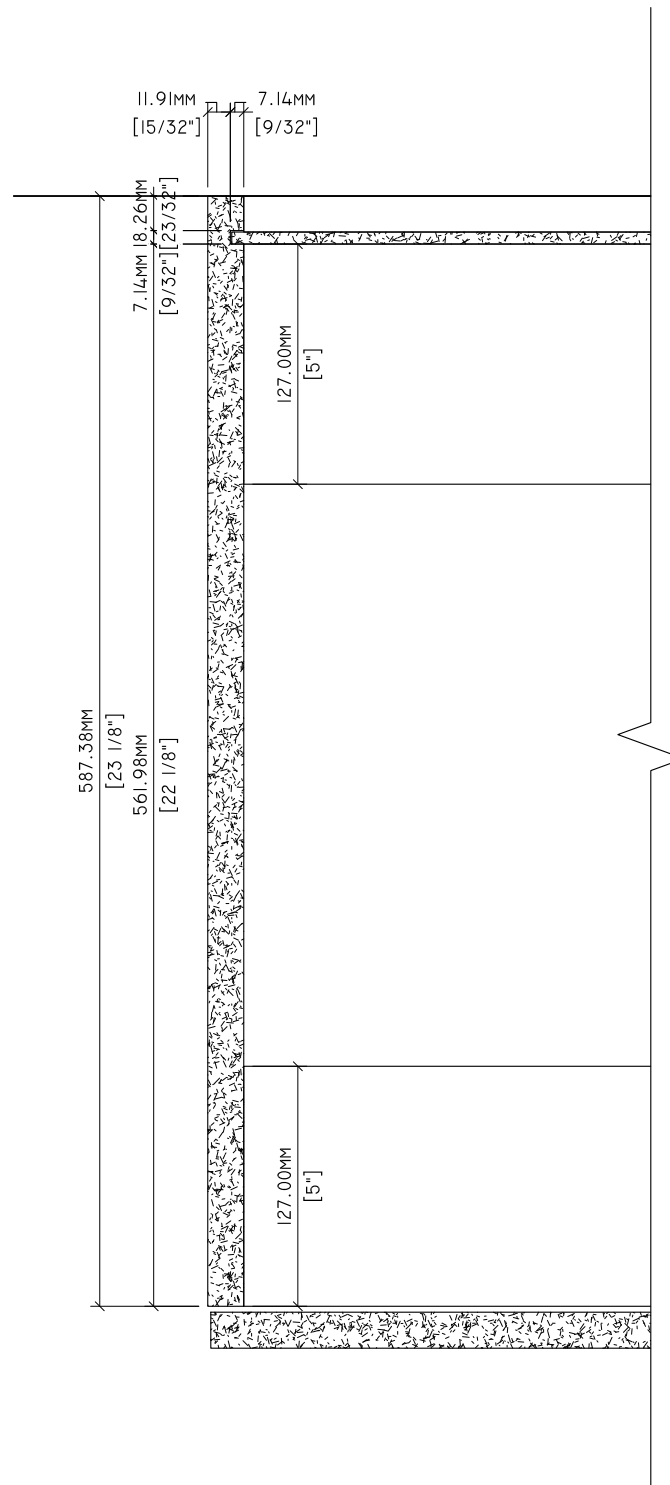
1
B-1.3

DETAIL
6" = 1'-0"

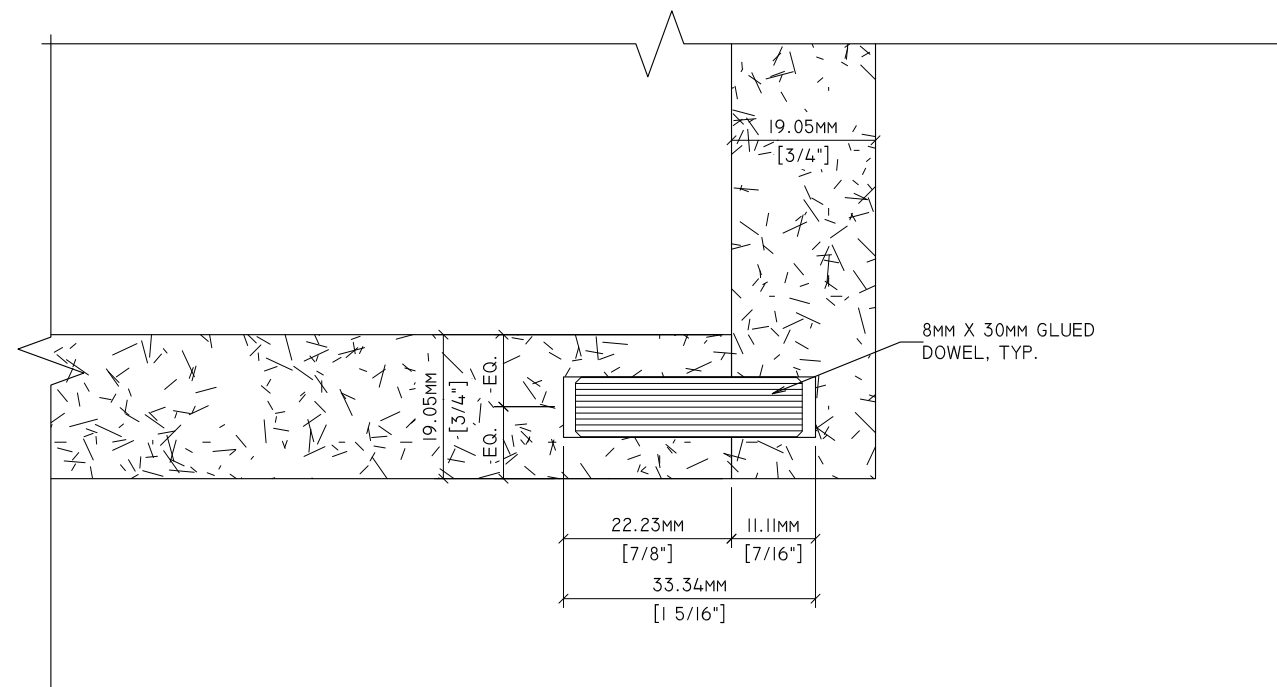


Standards Development and Performance Testing
 1310 Southerfield Road
 Americus, GA 31709

Drawn By:	HD	REVISIONS		SPECIMEN DWG. NO.: B-1.3
Reviewed By:	-	△1	-	JOINERY METHOD NO.: 8MM DOWEL
Revised By:	HKM	△2	7/7/2020	SPECIMEN MATERIAL: MDF, PB, VC
Revised By:	HKM	△3	7/9/2021	BATCH QUANTITY: -
Approved By:	-	△4	-	SCALE: AS NOTED



1 PLAN DETAIL
B-1.4 3" = 1'-0"



2 DETAIL
B-1.4 12" = 1'-0"



Standards Development and Performance Testing
1310 Southerfield Road
Americus, GA 31709

Drawn By:	HD	REVISIONS		SPECIMEN DWG. NO.: B-1.4
Reviewed By:	-	△1	-	JOINERY METHOD NO.: 8MM DOWEL
Revised By:	HKM	△2	7/7/2020	SPECIMEN MATERIAL: MDF, PB, VC
Revised By:	HKM	△3	7/9/2021	BATCH QUANTITY: -
Approved By:	-	△4	-	SCALE: AS NOTED